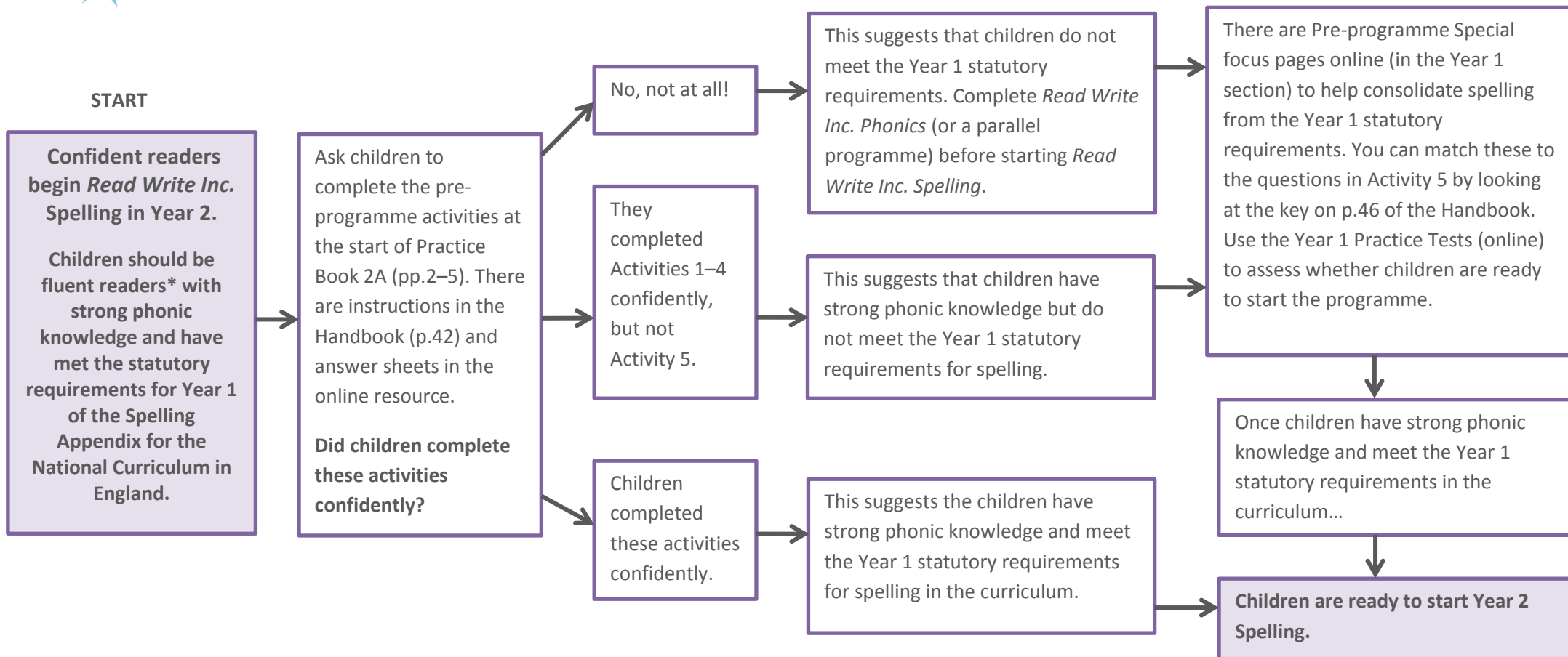




## Instructions for starting *Read Write Inc. Spelling* at Year 2



\*'Fluent reader' means reading at the equivalent of National Curriculum Level 2a or above; Grey Level or above for *Read Write Inc. Phonics*; Curriculum for Excellence First Level; fluent readers in Y2 for Wales and Year 3 for Northern Ireland.